



DINGWALL & HIGHLAND MARTS LIMITED

AUCTIONEERS • VALUATORS • ESTATE AGENTS

GRASS PARK LETS 2017

THURSDAY 30 MARCH

3.00 p.m.	Brahan Farms	96.69 acres in 10 lots
4.00 p.m.	Pitglassie	46.20 acres in 5 lots
4.30 p.m.	Kinellan	20.06 acres in 1 lot

FRIDAY 31 MARCH

1.00 p.m.	Artafallie	55.23 acres in 7 lots
1.45 p.m.	Drumderfit	79.14 acres in 4 lots
2.30 p.m.	Blairtua	22.50 acres in 3 lots
2.45 p.m.	Greenleonacks	27.70 acres in 3 lots
3.00 p.m.	Brae of Balnabeen	78.92 acres in 5 lots

SATURDAY 01 APRIL

10.00 a.m.	Coul & Trentham	254.58 acres in 10 lots
10.45 a.m.	Balloan	33.78 acres in 1 lot

TUESDAY 04 APRIL

6.30 p.m.	Brae of Cantray	70.94 acres in 5 lots
-----------	-----------------	-----------------------

**Dingwall & Highland Marts Ltd.,
Humberston, Bailechaul Road, Dingwall, Ross-shire, IV15 9TP**

t. (01349) 863252

f. (01349) 865062

www.dingwallmart.co.uk

THURSDAY 30 MARCH 2017 AT 3.00 P.M.

BRAHAN FARMS (FARM CODE:- 91/762/0009)

The land is not available to graziers for either BPS or LFASS claims in 2017.

Lot		Field Name	Field No.	Details
1	13.91	E2	NH/48972/54983	Cattle,sheep and/or cutting. LFA disadvantaged.
2	13.52	E23	NH/49261/54707	Cattle,sheep and/or cutting. LFA disadvantaged.
3	13.44	E24	NH/49491/54666	Cattle,sheep and/or cutting. LFA disadvantaged.
4	5.49	E15S	NH/49869/54745	Cattle,sheep and/or cutting. LFA disadvantaged.
5	6.10	E5N	NH/49945/54853	Cattle,sheep and/or cutting. LFA disadvantaged.
6	2.08	Ram Paddock	NH/51290/55284	Cattle, sheep and/or cutting.
7	6.50	Ussie Mills Triangle	NH/52444/55913	Cattle,sheep and/or cutting. LFA severly disadvantaged.
8	18.75	Ussie Mills West	NH/52736/56066	Cattle,sheep and/or cutting. LFA severly disadvantaged.
9	12.43	Ussie Mills East	NH/53296/56355	Cattle,sheep and/or cutting. LFA severly disadvantaged.
10	4.47	Ussie Mills East Triangle	NH/53513/56406	Cattle,sheep and/or cutting. LFA severly disadvantaged.

Conditions of let

- 1) Let to 20 October 2017 for cattle and to 20 December 2017 for sheep
- 2) No bulls or rams unless by prior arrangement.
- 3) Let for grazing cattle or sheep if specified and/or cutting.
- 4) Brahan fank available for stock handling. With prior notification and if convenient Easter Moy steading may also be available for stock handling - call 07770325705 to organise.
- 5) Graziers must visit their stock a minimum of three times per week.
- 6) Ring feeders, hoppers etc only by arrangement with Landlord.
- 7) Graziers are reminded that fields let for cutting must be cut by end July and grazing managed to Landlords satisfaction.
- 8) Grazing and mowing leases to be signed by both parties before entry.
- 9) 1 cwt fertiliser will be applied.

THURSDAY 30 MARCH 2017 AT 4.00 P. M.

PITGLASSIE FARM, DINGWALL (D. LAWSON ESQ.) FARM CODE:- 91/740/0013

The land is not available to graziers for either BPS or LFASS claims in 2017.

Lot	Acreage	Field Number	Details
1	10.5	NH/55031/58194	Grass
2	10.9	NH/54893/58219	Grass
3	11.0	NH/54822/57952	Grass
4	5.9	NH/54723/58245	Grass
5	7.9	NH/54685/58347	Grass

Conditions of let

- 1) Let for grazing cattle and/or sheep. Cattle to 20 October 2017, sheep 26 December 2017 and/or cutting. No rams after 1 August.
- 2) Let for grazing and/or cutting (all bales to be removed within 7 days of baling)
- 3) Right of grass topping reserved by the landlord.
- 4) 1cwt fertiliser to be applied.
- 5) Graziers must visit their stock a minimum of 3 times per week.
- 6) Ring feeders, hoppers etc only by arrangement with Landlord.
- 7) Graziers are reminded that fields let for cutting must be cut by end July and grazing managed to Landlords satisfaction.
- 8) Grazing and mowing leases to be signed by both parties before entry.



THURSDAY 30 MARCH 2017 AT 4.30 P.M.

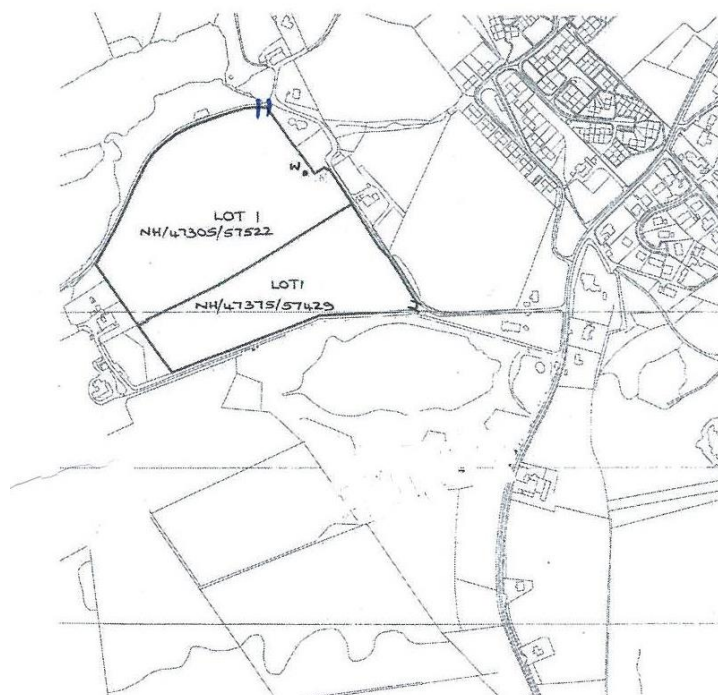
KINELLAN, STRATHPEFFER (C. BOWEN ESQ.)
(91/760/0113)

The land is not available to grazier for either BPS or LFASS claims in 2017.

Lot	Acreage	Field Numbers	
1	12.23 7.83	NH/47305/57522 NH/47375/57429	

Conditions of let

1. Let for grazing cattle or sheep.
2. Let to 20 October 2017 for cattle and to 20 December 2017 for sheep.
3. No bulls or rams.
4. Practically only the reseeded area (57522) may be cut.
5. Stock handling in field only.
6. Graziers must visit their stock a minimum of three times a week.
7. Ring feeders and hoppers etc only by arrangement with the Landlord (probably at the south eastern corner).
8. Graziers are reminded cutting must be by the end of July and grazing managed to Landlord's satisfaction.
9. Grazing and mowing leases to be signed by both parties before entry
10. One cwt fertiliser will be applied in April/May.
11. Ragwort is controlled annually. Troughs in fields, Fences are in good condition.



FRIDAY 31 MARCH 2017 AT 1.00 P.M.

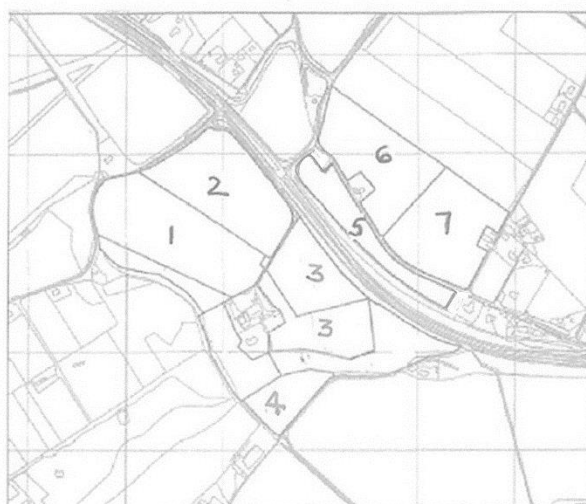
ARTAFALLIE – (91/738/0089)

The land is not available to grazier for either BPS or LFASS claims in 2017.

Lot	Acreage	Field Number	
1	11.42	NH62717/49225	
2	9.81	NH62810/49329	
3	4.87 5.21	NH62972/49147 NH63002/49050	
4	3.11	NH62935/48885	
5	3.78	NH63112/49213	
6	8.55	NH63121/49396	
7	8.48	NH63264/49242	

Conditions of Let.

1. Let for grazing cattle (no bulls) or sheep. No cutting. Cattle to 26 October 2017, sheep to 26 December 2017. No horses.
2. Fertiliser at 1 cwt per acre has been / will be applied by seller (as soon as ground conditions permit). Additional top dressing can be applied by occupier provided that it is a compound.
3. Use of handling pen in lot 1 to be available to occupiers 1, 2 and 3 on a first come first served basis. No stock handling on farm road or against field gates.
4. Field 4 accessed off Old Lettoch Road only.
5. No ring feeders, hoppers etc permitted at any time.
6. Graziers must visit their stock a minimum of 3 times per week and must leave a valid contact telephone number with seller.
7. Graziers are reminded that fields must be managed & topped as necessary to Landlords satisfaction. Right of grass topping reserved by the landlord.
8. Graziers are reminded that fields let for cutting must be cut by end July and grazing managed to Landlords satisfaction. Bales to be removed within 7 days.
9. Grazing leases to be signed by both parties before entry.



FRIDAY 31 MARCH 2017 AT 1.45 P. M.

DRUMDERFIT, MUNLOCHY (MESSRS J. CAMERON & SON) – (91/738/0004)

The land is not available to graziers for either BPS or LFASS claims in 2016.

Lot	Acreage	Field Number	Details
1	8.5	NH65606/51369	let for cattle and/or sheep. LFA status
2	9.3	NH65777/51294	let for cattle and/or sheep. LFA status
3	31.00 9.41 Let as 35.00 acres	NH65584/50985 NH65405/50603	let for cattle and/or sheep. LFA status.
4	4.50 16.43	NH65419/51068 NH65225/50659	let for cattle or sheep. LFA Non LFA

Conditions of let

- 1) Termination of let for cattle 31 October 2017 and sheep to 26 December 2017.
- 2) No fertiliser applied, sprayed for ragwort
- 3) Graziers must visit stock a minimum of three times per week.
- 4) Right of topping reserved by the landlord.
- 5) Cattle shelter. Gates and crush for use of grazier.
- 6) Ring feeders, hoppers etc only by arrangement with Landlord.
- 7) Sprayed for Ragwort
- 8) Graziers are reminded that fields let for cutting must be cut by end July and grazing managed to Landlords satisfaction.
- 9) Grazing and mowing leases to be signed by both parties before entry.

FRIDAY 31 MARCH 2017 AT 2.30 P. M.

BLAIRTUA, CULBOKIE (MISS S. MENZIES) - (FARM CODE :- 91/761/0138)

The land is not available to graziers for either BPS or LFASS claims in 2017.

Lot	Acreage	Field Number	Details
1	10.5	NH62050/61755	Sheep and/or cutting
2	6.5	NH62349/61831	Sheep and/or cutting
3	5.5	NH62289/61728	Sheep and/or cutting

Conditions of let

- 1) Let for grazing sheep to 30 November 2017 and/or cutting
- 2) No fertiliser applied - grazier may apply a compound
- 3) Grazier must visit their stock regularly.
- 4) Any clipping, dipping etc must be carried out off-site.
- 5) Grazing and mowing leases to be signed by both parties before entry.

FRIDAY 31 MARCH 2017 AT 2.45 P. M.

GREENLEONACKS, CULBOKIE (T. McCALLUM ESQ.)

The land is not available to graziers for either BPS or LFASS claims in 2017.

Lot	Acreage	Field Number	
1	12.0	NH61401/58307	
2	11.7	NH61503/58056	
3	4.0	NH61416/57902	

Conditions of let

- 1) LFA Status
- 2) Let for cutting and/or grazing **sheep** only to 25 December 2017 .
- 3) Grazer must visit their stock a minimum of three times per week.
- 4) Graziers are reminded that fields let for cutting must be cut by end July and grazing managed to Landlords satisfaction.
- 5) Grazing and mowing leases to be signed by both parties before entry.

FRIDAY 31 MARCH 2017 AT 3.00 P. M.

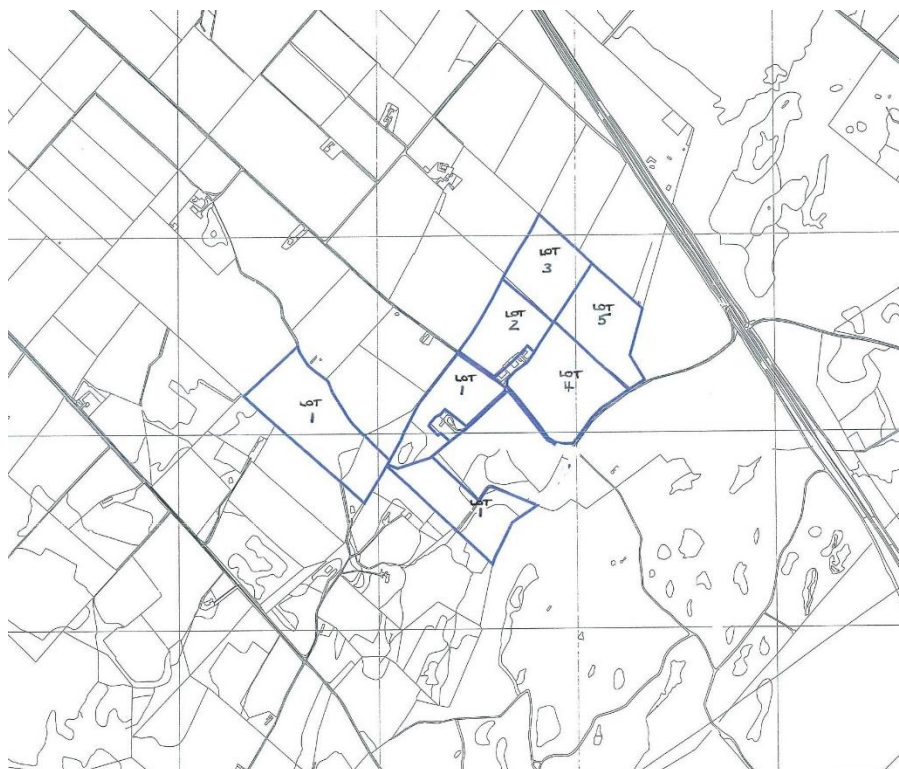
BRAE OF BALNABEEN – 91/761/0045

The land is not available to graziers for either BPS or LFASS claims in 2016.

Lot	Acreage	Field Number	
1	29.00	NH/58868/55015 NH/59164/55076 NH/59217/54806	
2	7.10 7.85	NH/59322/55251 NH/59435/55412	
4	12.10	NH/59472/55091	
5	9.26	NH/59568/55244	
6	13.61		Let as 7 acres grass including 9.5 acres trees & rough (FOC)

Conditions of let

- 1 Let for grazing cattle, sheep and/or cutting
- 2 Grazing cattle to 25 October 2017 and sheep until 26 December 2017.
- 3 No horses or bulls.
- 4 Graziers are reminded that fields let for cutting must be cut by end July and grazing managed to Landlords satisfaction.
- 5 Grazing and mowing leases to be signed by both parties before entry.



**SATURDAY 01 APRIL 2017 AT 10.00 A.M.
CAMBUSMORE FARMING CO.**

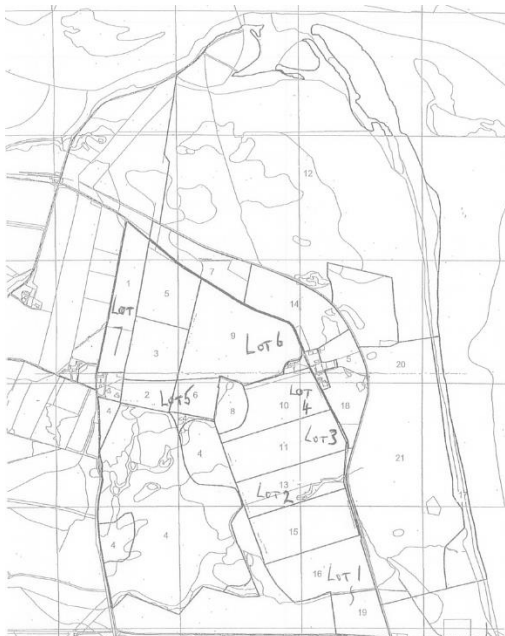
The land is not available to tenants for either BPS or LFASS claims in 2017.

COUL FARM, DORNOCH FARM CODE:- 96/830/0132

Lot	Acreage	Field Number	Details
COUL FARM – (FARM CODE 96/830/0132)			
1	18.90	NH/81077/93236	Grass and clover mix for cutting or grazing
	8.92	NH/81231/93055	Grass and clover mix for cutting or grazing
2	16.53	NH/80980/96321	Grass and clover mix for cutting or grazing
3	20.26	NH/80942/93746	Grass and clover mix for cutting or grazing
4	16.38	NH/80923/93927	Grass and clover mix for cutting or grazing
5	5.71	NH/80382/93966	Grass and clover mix for cutting or grazing
	6.52	NH/80570/93940	Grass and clover mix for cutting or grazing
6	33.31	NH/80736/94158	Grass and clover mix for cutting or grazing
7	15.52	NH/80279/94349	Grass and clover mix for cutting or grazing
TRENTHAM FARM (FARM CODE 96/830/0121)			
8	26.49	NH/78513/93978	Grass and clover mix for cutting only. Field not fenced or watered.
9	26.91	NH/78348/93385	Grass and clover mix for cutting only. Field not fenced or watered.
10	19.99	NH/78550/93136	Rough grazing
	19.30	NH/78736/93379	Rough grazing
	19.84	NH/78846/93169	Rough grazing

Conditions of let

- 1) Field(s) to be let under a written agreement from 1st April 2017 to 31st October 2017 for cattle and to 31st December 2017 for sheep; these periods may be extended by prior agreement with the proprietor. A written agreement will be supplied by the auctioneers to be signed by the Occupier upon payment.
- 2) The land is not available to tenants for either BPS or LFASS claims in 2017.
- 3) No bulls or horses allowed.
- 4) Rams may be grazed up to 3rd August 2017 but not thereafter
- 5) The Occupier will leave the fences, gates and dykes in no better but no worse condition.
- 6) Any obvious faults or unsoundness in stock will be reported to the Occupier, if seen, but all responsibilities lie with the Occupier.
- 7) The Occupier to ensure that his Public Liability Cover extends to the areas that form his lets.
- 8) Agreements to be dated after 17 May 2017 but grazing may start immediately
- 9) If required, contact can be made with Colin Taylor on 07597 561396.



SATURDAY 01 APRIL 2016 AT 10.45 A.M.

BALLOAN, DORNOCH (P. MURRAY ESQ.)

The land is not available to grazier for either BPS or LFASS claims in 2017.

Lot	Acreage	Field Number	Details
1	16.41 17.37	NH/7922/90245 NH/79512/90262	

Conditions of let

1. Let for grazing cattle to 26 October 2017. Sheep to 26 December 2017 and/or cutting.
2. No fertiliser applied but tenant may do so.
3. No horses or bulls.
4. Graziers are reminded that fields let for cutting must be cut by end July and grazing managed to Landlords satisfaction.
5. Grazing and mowing leases to be signed by both parties before entry.
6. Agreement to be dated after 15 May 2017 but grazing may start immediately.

TUESDAY 04 APRIL 2017 AT 6.30 P. M.

BRAE OF CANTRAY, CROY (J. DALLAS ESQ.)

The land is not available to grazier for either BPS or LFASS claims in 2016.

Lot	Acreage	Field Number	Details
1	15.27	NH79026/47860	Westfield
2	8.69	NH78994/48099	Cantrayfield
3	15.17	NH79051/47559	Bottom Centre
4	14.81	NH78842/47886	Housefield
5	17.00	NH78811/47445	Treefield

Conditions of let

- 1) 1½ cwt per acre compound fertiliser to be applied
- 2) Grazier may apply more compound by arrangement
- 3) Let for grazing cattle only (no bulls) and/or cut.
- 4) Termination of let 25 October 2017.
- 5) Grazier must visit their stock a minimum of three times per week.
- 6) Ring feeders, hoppers etc only by arrangement with Landlord.
- 7) Graziers are reminded that fields let for cutting must be cut by end July and grazing managed to Landlords satisfaction.
- 8) Grazing and mowing leases to be signed by both parties before entry.